

# Manual Supplement

Manual Title: Power Log PC Application Software Supplement Issue: 1  
 Part Numbers: - - - Part Number: 4822 872 30880  
 Print Date: September 2012 Issue Date: September 5, 2012  
 Revision/Date: September 2012 Page Count: 4

This supplement contains information about release V3.3 of the PowerLog PC Application software.

## Connecting to a Power Quality Instrument

V3.3 Compatible Instruments:

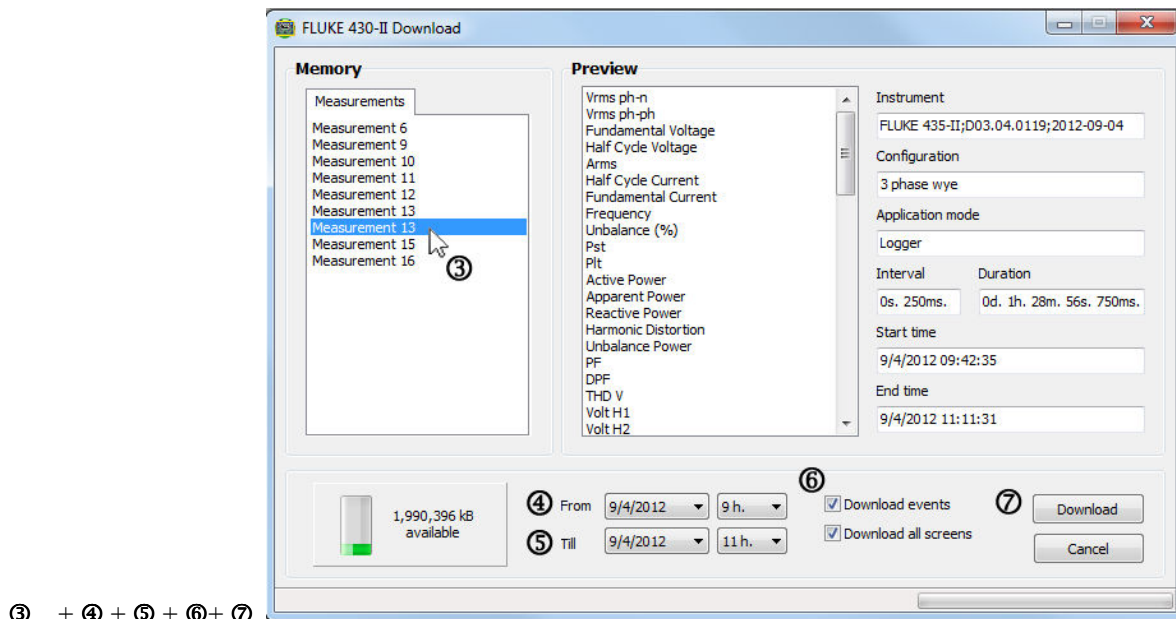
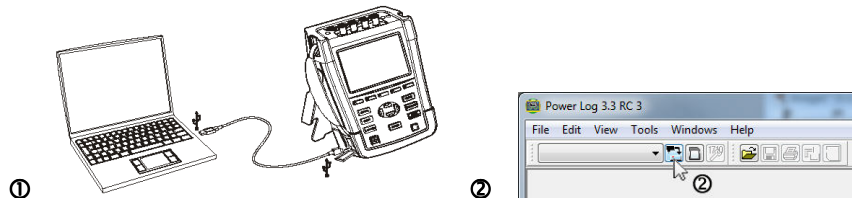
✓	434-II, 435-II, 437-II firmware V03.05 or later *)
✓	434, 435
✓	1710
✓	345
✓	1735

\*) V3.3 is compatible with Fluke 430-II firmware V03.05 for downloading via USB.  
 V3.3 is compatible with Fluke 430-II firmware V03.00 and later for reading measurement data from SD Card directly.

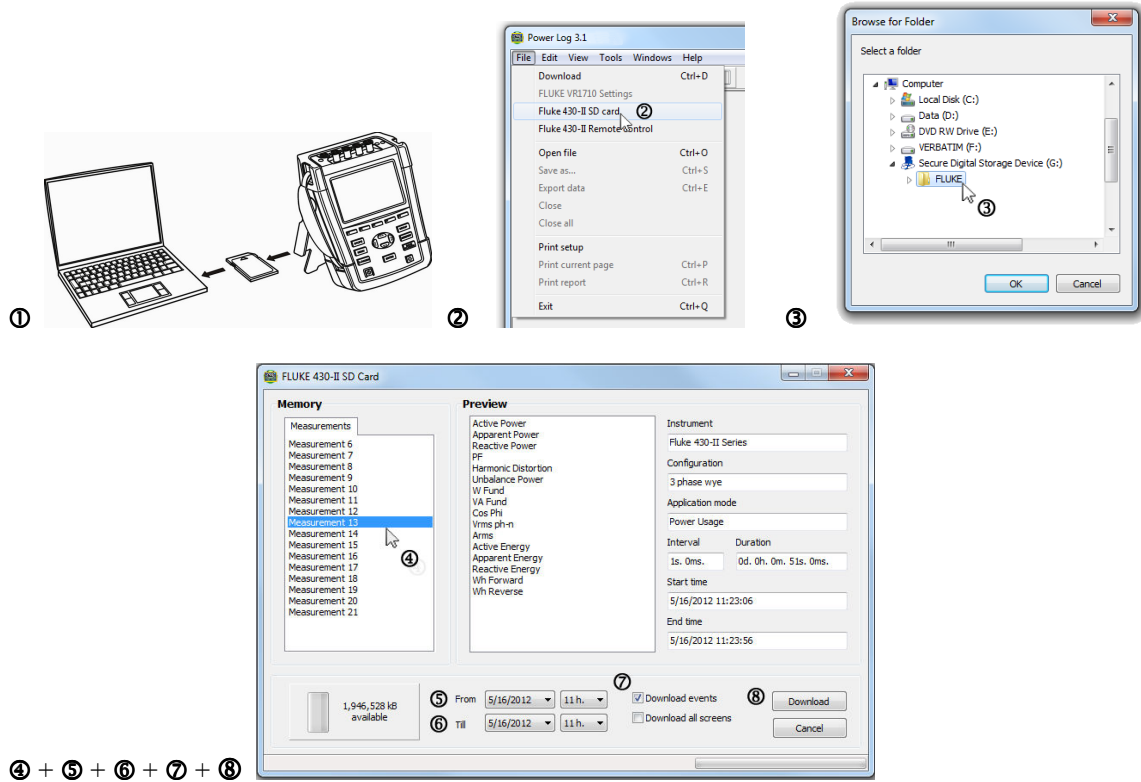


## Downloading Logged Data to a PC:

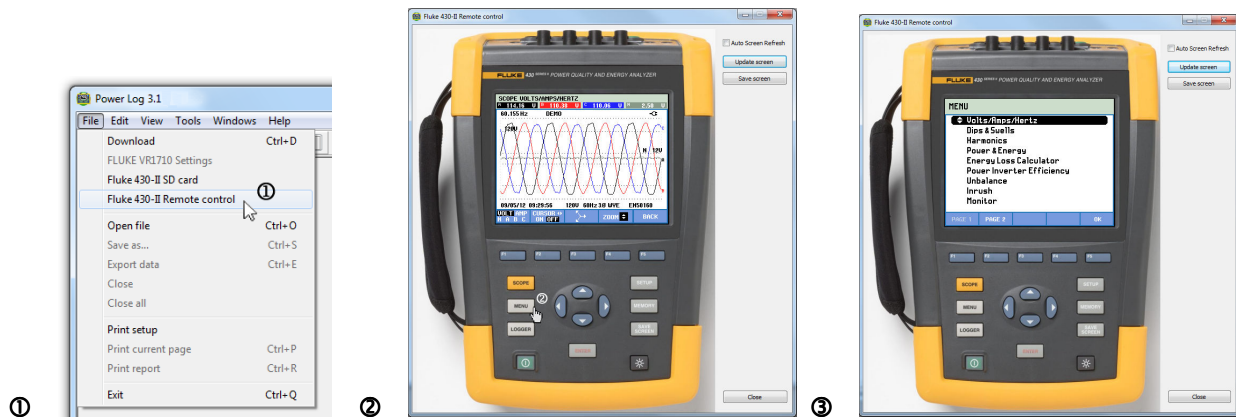
USB:



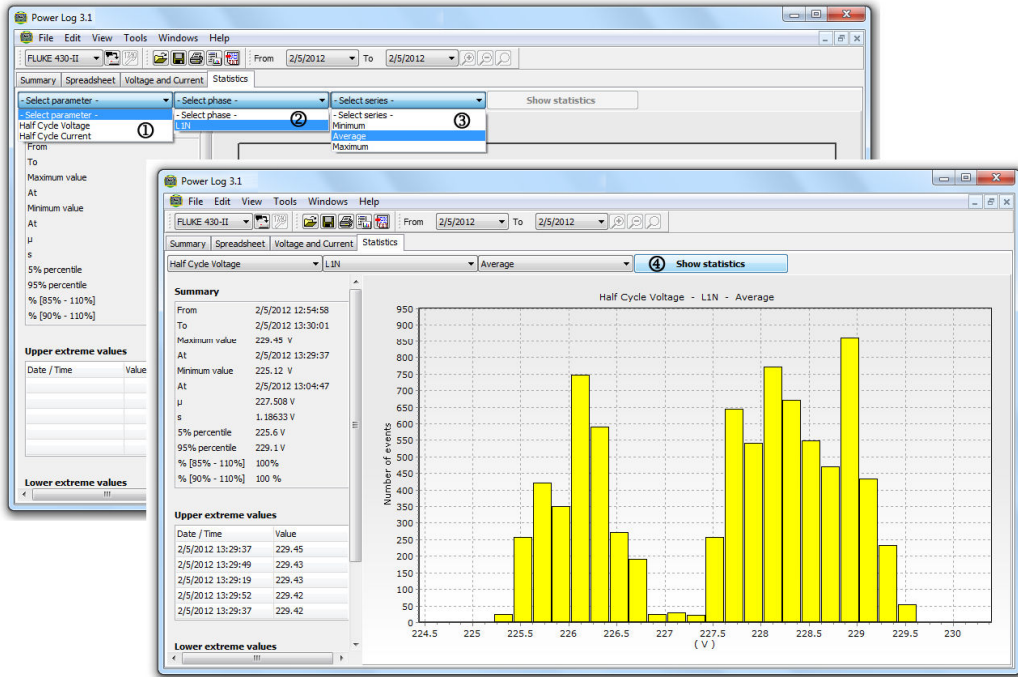
**New SD-CARD:**



**New Remote Control Fluke 430-II:**

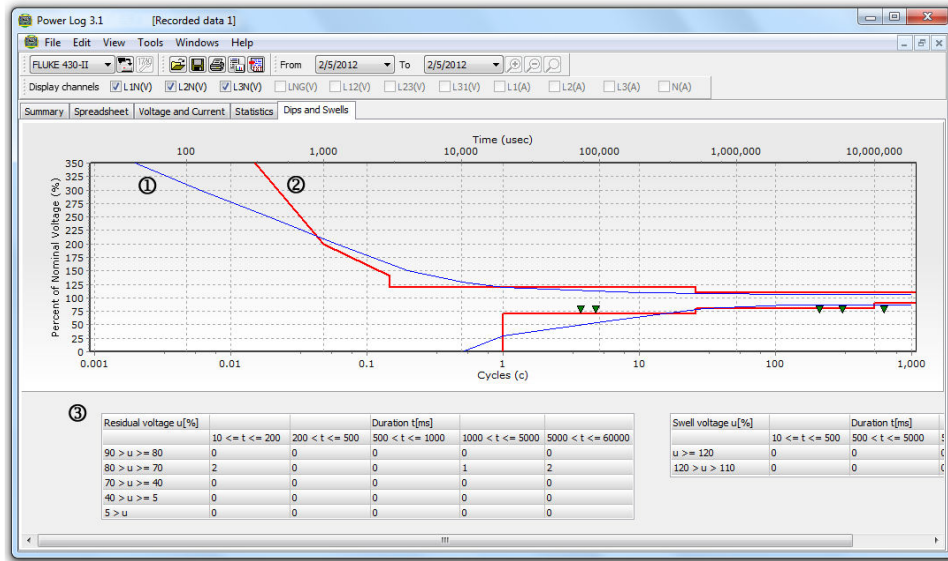


**New Statistics**



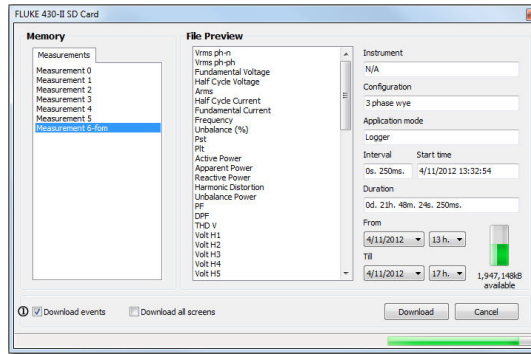
- ①
- ②
- ③
- ④

**New Dips and Swells**



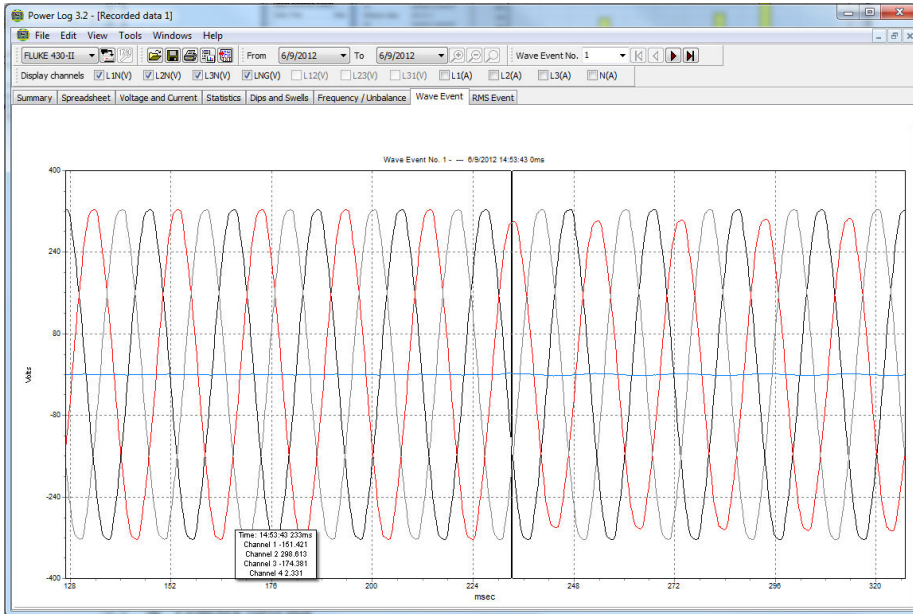
- ① CEBEMA curve plot
- ② ITIC curve plot
- ③ EN50160 2009 Dips and Swells classification table

### New Events



① Include event data with Download

One second of waveform data for each event



Seven seconds of 1/2 cycle rms data for each event

