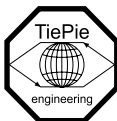


Handyscope HS6 DIFF

User manual



TiePie engineering

ATTENTION!

Measuring directly on the **line voltage** can be very dangerous.

Copyright ©2018 TiePie engineering.
All rights reserved.

Revision 2.21, June 2018

Despite the care taken for the compilation of this user manual, TiePie engineering can not be held responsible for any damage resulting from errors that may appear in this manual.

Contents

1	Safety	1
2	Declaration of conformity	3
3	Introduction	5
3.1	Differential input	7
3.1.1	SafeGround on each channel	9
3.1.2	Differential attenuators	11
3.1.3	Differential test lead	12
3.2	Sampling	13
3.3	Sample frequency	14
3.3.1	Aliasing	15
3.4	Digitizing	16
3.5	Signal coupling	17
4	Driver installation	19
4.1	Introduction	19
4.2	Where to find the driver setup	19
4.3	Executing the installation utility	19
5	Hardware installation	25
5.1	Power the instrument	25
5.1.1	External power	25
5.2	Connect the instrument to the computer	26
5.2.1	Found New Hardware Wizard	26
5.3	Plug into a different USB port	27
5.4	Operating conditions	27
6	Combining instruments	29
7	Front panel	31
7.1	Channel input connectors	31
7.2	Power indicator	31
8	Rear panel	33
8.1	Power	33
8.1.1	Power adapter	34
8.1.2	USB power cable	34

8.2	USB	35
8.3	Extension Connector	35
8.4	CMI	36
8.5	Ventilation slot	37
9	Specifications	39
9.1	Acquisition system	39
9.2	Acquisition system (continued)	40
9.3	Trigger system	41
9.4	Power	41
9.5	Multi-instrument synchronization	41
9.6	Probe calibration	42
9.7	Physical	42
9.8	I/O connectors	42
9.9	Interface	42
9.10	System requirements	42
9.11	Environmental conditions	42
9.12	Measure leads	43
9.13	Differential attenuators	43
9.14	Certifications and Compliances	44
9.15	Package contents	44

When working with electricity, no instrument can guarantee complete safety. It is the responsibility of the person who works with the instrument to operate it in a safe way. Maximum security is achieved by selecting the proper instruments and following safe working procedures. Safe working tips are given below:

- Always work according (local) regulations.
- Work on installations with voltages higher than 25 V_{AC} or 60 V_{DC} should only be performed by qualified personnel.
- Avoid working alone.
- Observe all indications on the Handyscope HS6 DIFF before connecting any wiring
- Check the probes/test leads for damages. Do **not** use them if they are damaged
- Take care when measuring at voltages higher than 25 V_{AC} or 60 V_{DC}.
- Do not operate the equipment in an explosive atmosphere or in the presence of flammable gases or fumes.
- Do not use the equipment if it does not operate properly. Have the equipment inspected by qualified service personal. If necessary, return the equipment to TiePie engineering for service and repair to ensure that safety features are maintained.



TiePie engineering
Koperslagersstraat 37
8601 WL Sneek
The Netherlands

EC Declaration of conformity

We declare, on our own responsibility, that the product

Handyscope HS6 DIFF-1000(XM/S/G)
Handyscope HS6 DIFF-500(XM/S/G)
Handyscope HS6 DIFF-200(XM/S/G)
Handyscope HS6 DIFF-100(XM/S/G)
Handyscope HS6 DIFF-50(XM/S/G)

for which this declaration is valid, is in compliance with

EN 55011:2009/A1:2010

IEC 61000-6-1/EN 61000-6-1:2007

EN 55022:2006/A1:2007

IEC 61000-6-3/EN 61000-6-3:2007

according the conditions of the EMC standard 2004/108/EC,

also with

Canada: ICES-001:2004

Australia/New Zealand: AS/NZS

and

IEC 61010-1:2001/EN

USA: UL61010-1: 2004

and is categorized as CAT I 30 Vrms, 42 Vpk, 60 Vdc

Sneek, 1-3-2017

ir. A.P.W.M. Poelsma

Environmental considerations

This section provides information about the environmental impact of the Handyscope HS6 DIFF.

Handyscope HS6 DIFF end-of-life handling

Production of the Handyscope HS6 DIFF required the extraction and use of natural resources. The equipment may contain substances that could be harmful to the environment or human health if improperly handled at the Handyscope HS6 DIFF's end of life.

In order to avoid release of such substances into the environment and to reduce the use of natural resources, recycle the Handyscope HS6 DIFF in an appropriate system that will ensure that most of the materials are reused or recycled appropriately.

The symbol shown below indicates that the Handyscope HS6 DIFF complies with the European Union's requirements according to Directive 2002/96/EC on waste electrical and electronic equipment (WEEE).



Restriction of Hazardous Substances

The Handyscope HS6 DIFF has been classified as Monitoring and Control equipment, and is outside the scope of the 2002/95/EC RoHS Directive.



Before using the Handyscope HS6 DIFF first read chapter 1 about safety.

Many technicians investigate electrical signals. Though the measurement may not be electrical, the physical variable is often converted to an electrical signal, with a special transducer. Common transducers are accelerometers, pressure probes, current clamps and temperature probes. The advantages of converting the physical parameters to electrical signals are large, since many instruments for examining electrical signals are available.

The Handyscope HS6 DIFF is a portable four channel measuring instrument with differential inputs. It is available in several models with different maximum sampling frequencies. The native resolutions are 8, 12 and 14 bits and a user selectable resolution of 16 bits is available too, with adjusted maximum sampling frequencies:

Measuring		Model				
Resolution	Channels	HS6D-1000	HS6D-500	HS6D-200	HS6D-100	HS6D-50
8 bit	1 ch	1 GS/s	500 MS/s	200 MS/s	100 MS/s	50 MS/s
	2 ch	500 MS/s	200 MS/s	100 MS/s	50 MS/s	20 MS/s
	3 or 4 ch	200 MS/s	100 MS/s	50 MS/s	20 MS/s	10 MS/s
12 bit	1 ch	500 MS/s	200 MS/s	100 MS/s	50 MS/s	20 MS/s
	2 ch	200 MS/s	100 MS/s	50 MS/s	20 MS/s	10 MS/s
	3 or 4 ch	100 MS/s	50 MS/s	20 MS/s	10 MS/s	5 MS/s
14 bit		100 MS/s	50 MS/s	20 MS/s	10 MS/s	5 MS/s
16 bit		6.25 MS/s	3.125 MS/s	1.25 MS/s	625 kS/s	312.5 kS/s

Table 3.1: Maximum sampling frequencies

The Handyscope HS6 DIFF supports high speed continuous streaming measurements. The maximum streaming rates when connected to a USB 3.0 port are:

Measuring		Model				
Resolution	Channels	HS6D-1000	HS6D-500	HS6D-200	HS6D-100	HS6D-50
8 bit	1 ch	200 MS/s ¹	100 MS/s ¹	40 MS/s	20 MS/s	10 MS/s
	2 ch	200 MS/s ²	50 MS/s ²	20 MS/s	10 MS/s	5 MS/s
	3 or 4 ch	100 MS/s ³	25 MS/s ³	10 MS/s	5 MS/s	2.5 MS/s
12 bit	1 ch	200 MS/s ²	50 MS/s ²	20 MS/s	10 MS/s	5 MS/s
	2 ch	100 MS/s ³	25 MS/s ³	10 MS/s	5 MS/s	2.5 MS/s
	3 or 4 ch	50 MS/s ⁴	12.5 MS/s ⁴	5 MS/s	2.5 MS/s	1.25 MS/s
14 bit	1 ch	100 MS/s ²	50 MS/s ²	20 MS/s	10 MS/s	5 MS/s
	2 ch	50 MS/s ³	25 MS/s ³	10 MS/s	5 MS/s	2.5 MS/s
	3 or 4 ch	25 MS/s ⁴	12.5 MS/s ⁴	5 MS/s	2.5 MS/s	1.25 MS/s
16 bit		6.25 MS/s ⁵	3.125 MS/s	1.25 MS/s	625 kS/s	312.5 kS/s

Table 3.2: Maximum streaming rates

¹ ≤ 40 MS/s when connected to USB 2.0

² ≤ 20 MS/s when connected to USB 2.0

³ ≤ 10 MS/s when connected to USB 2.0

⁴ ≤ 5 MS/s when connected to USB 2.0

⁵ ≤ 3.125 MS/s when connected to USB 2.0, measuring 3 or 4 channels

The Handyscope HS6 DIFF is available with two memory configurations, these are:

Measuring		Model	
Resolution	Channels	Standard	with XM option
8 bit	1 ch	1 MS	256 MS
	2 ch	512 KS	128 MS
	3 or 4 ch	256 KS	64 MS
12, 14, 16 bit	1 ch	512 KS	128 MS
	2 ch	256 KS	64 MS
	3 or 4 ch	128 KS	32 MS

Table 3.3: Maximum record lengths per channel

Optionally available for the Handyscope HS6 DIFF is **SureConnect** connection test. **SureConnect** connection test tells you immediately whether your test probe or clip actually makes electrical contact or not. No more doubt whether your probe doesn't make contact or there really is no signal. This is useful when surfaces are oxidized and your probe cannot get a good electrical contact. Simply activate the **SureConnect** and you know whether there is contact or not. Also when back probing connectors in confined places, **SureConnect** immediately shows whether the probes make contact or not.



Models of the Handyscope HS6 DIFF with **SureConnect** come with resistance measurement on all channels. Resistances up to 2 MOhm can be measured directly. Resistance can be shown in meter displays and can also be plotted versus time in a graph, creating an Ohm scope.



With the **SafeGround** protected ground option, the differential input of the Handyscope HS6 DIFF is switched into a ground current protected single ended input. This allows to perform single ended measurements with e.g. an attenuating oscilloscope probe, without the risk of creating a short circuit to ground.



With the accompanying software the Handyscope HS6 DIFF can be used as an oscilloscope, a spectrum analyzer, a true RMS voltmeter or a transient recorder. All instruments measure by sampling the input signals, digitizing the values, process them, save them and display them.

3.1 Differential input

Most oscilloscopes are equipped with standard, single ended inputs, which are referenced to ground. This means that one side of the input is always connected to ground and the other side to the point of interest in the circuit under test.

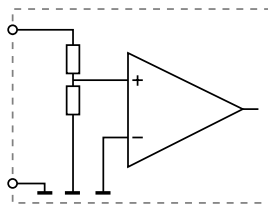


Figure 3.1: Single ended input

Therefore the voltage that is measured with an oscilloscope with standard, single ended inputs is always measured between that specific point and ground.

When the voltage is not referenced to ground, connecting a standard single ended oscilloscope input to the two points would create a short circuit between one of the points and ground, possibly damaging the circuit and the oscilloscope.

A safe way would be to measure the voltage at one of the two points, in reference to ground and at the other point, in reference to ground and then calculate the voltage difference between the two points. On most oscilloscopes this can be done by connecting one of the channels to one point and another channel to the other point and then use the math function $CH1 - CH2$ in the oscilloscope to display the actual voltage difference.

There are some disadvantages to this method:

- a short circuit to ground can be created when an input is wrongly connected
- to measure one signal, two channels are occupied
- by using two channels, the measurement error is increased, the errors made on each channel will be combined, resulting in a larger total measurement error
- The Common Mode Rejection Ratio (CMRR) of this method is relatively low. If both points have a relative high voltage, but the voltage difference between the two points is small, the voltage difference can only be measured in a high input range, resulting in a low resolution

A much better way is to use an oscilloscope with a differential input.

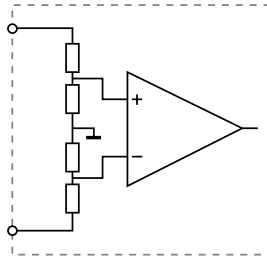


Figure 3.2: Differential input

A differential input is not referenced to ground, but both sides of the input are "floating". It is therefore possible to connect one side of the input to one point in the circuit and the other side of the input to the other point in the circuit and measure the voltage difference directly.

Advantages of a differential input:

- No risk of creating a short circuit to ground
- Only one channel is required to measure the signal
- More accurate measurements, since only one channel introduces a measurement error
- The CMRR of a differential input is high. If both points have a relative high voltage, but the voltage difference between the two points is small, the voltage difference can be measured in a low input range, resulting in a high resolution

Disadvantages of a differential input:

- Higher sensitivity to external disturbances when used with standard measure leads
- Cannot be used in combination with a standard attenuating oscilloscope probe

3.1.1 SafeGround on each channel

The **SafeGround** protected ground feature of the Handyscope HS6 DIFF allows to switch the differential inputs to single ended inputs. This enables to perform single ended measurements as well as using (attenuating) oscilloscope probes. **SafeGround** can be enabled for each channel individually.

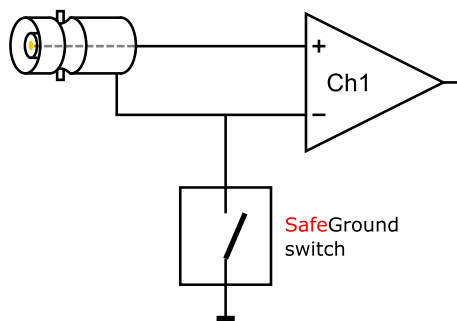




Figure 3.3: SafeGround

A button on each channel toolbar in the software allows to control the **SafeGround** state between differential  and single ended 

When **SafeGround** is enabled for a channel, the input is switched to single ended and the ground current of that input is real time monitored. When the ground current becomes too high (<500 mA), the ground connection is immediately (<100 ns) opened, protecting the input against short circuits to ground. Also a warning dialog is shown:

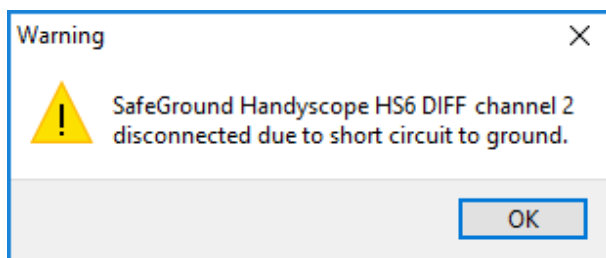


Figure 3.4: SafeGround warning

Once the short circuit is removed, **SafeGround** can be enabled again.

SafeGround protects your scope, your computer and your circuit under test against accidental wrong ground connections. The **SafeGround** protected ground feature is optionally available for the Handyscope HS6 DIFF.

3.1.2 Differential attenuators

To increase the input range of the Handyscope HS6 DIFF, it comes with a differential 1:10 attenuator for each channel. This differential attenuator is specially designed to be used with the Handyscope HS6 DIFF.



Figure 3.5: Differential attenuator

For a differential input, both sides of the input need to be attenuated.

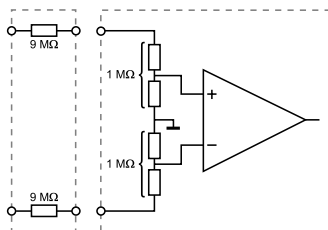


Figure 3.6: Differential input

Standard oscilloscope probes and attenuators only attenuate one side of the signal path. These are not suitable to be used with a differential input. Using these on a differential input will have a negative effect on the CMRR and will introduce measurement errors.

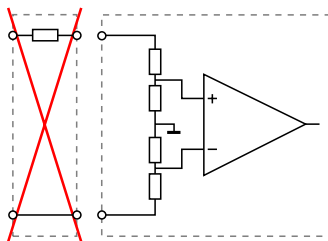


Figure 3.7: Differential input



The Differential Attenuator and the inputs of the Handyscope HS6 DIFF are differential, which means that the outside of the BNC's are not grounded, but carry life signals.

When using the attenuator, the following points have to be taken into consideration:

- do not connect other cables to the attenuator than the ones that are supplied with the instrument
- do not touch the metal parts of the BNC's when the attenuator is connected to the circuit under test, they can carry a dangerous voltage. It will also influence the measurements and create measurement errors.
- do not connect the outside of the two BNC's of the attenuator to each other as this will short circuit a part of the internal circuit and will create measurement errors
- do not connect the outside of the BNC's of two or more attenuators that are connected to different channels of the Handyscope HS6 DIFF to each other
- do not apply excessive mechanical force to the attenuator in any direction (e.g. pulling the cable, using the attenuator as handle to carry the Handyscope HS6 DIFF, etc.)



When the Handyscope HS6 DIFF is equipped with **SafeGround** and the inputs are switched to single ended, using the differential attenuator will lead to significant measurement errors. Use attenuating oscilloscope probes instead.

3.1.3 Differential test lead

The Handyscope HS6 DIFF comes with a special differential test lead. This test lead is specially designed to ensure a good CMRR.

The special heat resistant differential test lead provided with the Handyscope HS6 DIFF is designed to be immune for noise from the surrounding environment.



The differential test lead is only immune for noise when used on a differential input. When the Handyscope HS6 DIFF is equipped with **SafeGround** and the inputs are switched to single ended, the differential test lead will **not** be immune for noise. Use standard shielded test leads or oscilloscope probes instead.

3.2 Sampling

When sampling the input signal, samples are taken at fixed intervals. At these intervals, the size of the input signal is converted to a number. The accuracy of this number depends on the resolution of the instrument. The higher the resolution, the smaller the voltage steps in which the input range of the instrument is divided. The acquired numbers can be used for various purposes, e.g. to create a graph.

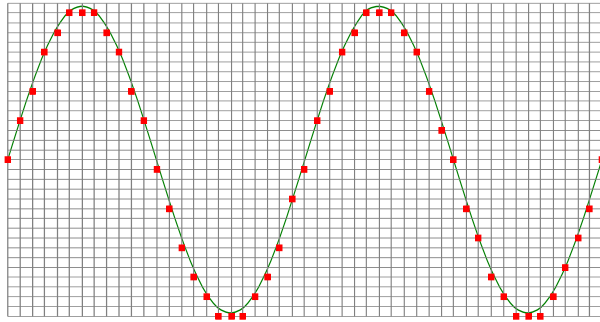


Figure 3.8: Sampling

The sine wave in figure 3.8 is sampled at the dot positions. By connecting the adjacent samples, the original signal can be reconstructed from the samples. You can see the result in figure 3.9.

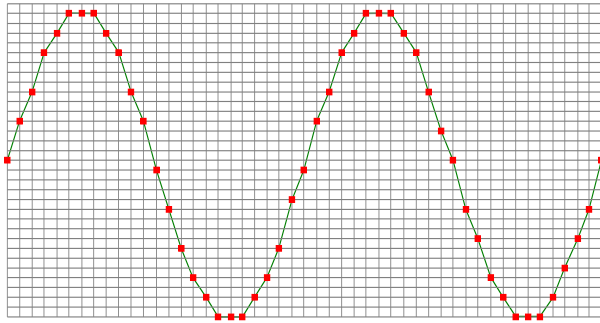


Figure 3.9: "connecting" the samples

3.3 Sample frequency

The rate at which the samples are taken is called the **sampling frequency**, the number of samples per second. A higher sampling frequency corresponds to a shorter interval between the samples. As is visible in figure 3.10, with a higher sampling frequency, the original signal can be reconstructed much better from the measured samples.

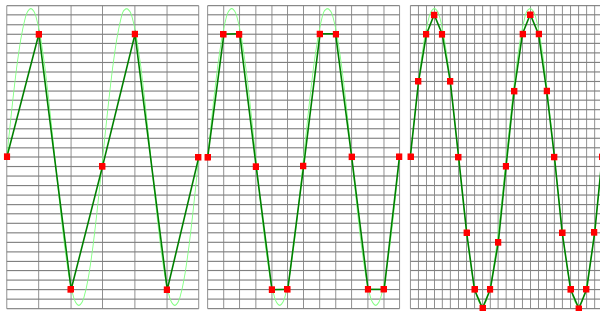


Figure 3.10: The effect of the sampling frequency

The sampling frequency must be higher than 2 times the highest frequency in the input signal. This is called the **Nyquist frequency**. Theoretically it is possible to reconstruct the input signal with more than 2 samples per period. In practice, 10 to 20 sam-

ples per period are recommended to be able to examine the signal thoroughly.

3.3.1 Aliasing

When sampling an analog signal with a certain sampling frequency, signals appear in the output with frequencies equal to the sum and difference of the signal frequency and multiples of the sampling frequency. For example, when the sampling frequency is 1000 Hz and the signal frequency is 1250 Hz, the following signal frequencies will be present in the output data:

Multiple of sampling frequency	1250 Hz signal	-1250 Hz signal
...		
-1000	$-1000 + 1250 = \mathbf{250}$	$-1000 - 1250 = -2250$
0	$0 + 1250 = 1250$	$0 - 1250 = -1250$
1000	$1000 + 1250 = 2250$	$1000 - 1250 = -250$
2000	$2000 + 1250 = 3250$	$2000 - 1250 = 750$
...		

Table 3.4: Aliasing

As stated before, when sampling a signal, only frequencies lower than half the sampling frequency can be reconstructed. In this case the sampling frequency is 1000 Hz, so we can only observe signals with a frequency ranging from 0 to 500 Hz. This means that from the resulting frequencies in the table, we can only see the 250 Hz signal in the sampled data. This signal is called an **alias** of the original signal.

If the sampling frequency is lower than twice the frequency of the input signal, **aliasing** will occur. The following illustration shows what happens.

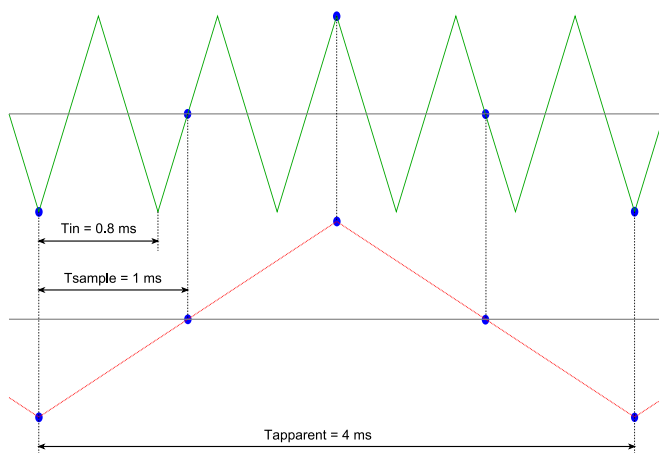


Figure 3.11: Aliasing

In figure 3.11, the green input signal (top) is a triangular signal with a frequency of 1.25 kHz. The signal is sampled with a frequency of 1 kHz. The corresponding sampling interval is $1/1000\text{Hz} = 1\text{ms}$. The positions at which the signal is sampled are depicted with the blue dots. The red dotted signal (bottom) is the result of the reconstruction. The period time of this triangular signal appears to be 4 ms, which corresponds to an apparent frequency (alias) of 250 Hz ($1.25 \text{ kHz} - 1 \text{ kHz}$).



To avoid aliasing, always start measuring at the highest sampling frequency and lower the sampling frequency if required.

3.4 Digitizing

When digitizing the samples, the voltage at each sample time is converted to a number. This is done by comparing the voltage with a number of levels. The resulting number is the number corresponding to the level that is closest to the voltage. The number of levels is determined by the resolution, according to the following relation: $LevelCount = 2^{Resolution}$.

The higher the **resolution**, the more levels are available and the more accurate the input signal can be reconstructed. In figure 3.12, the same signal is digitized, using two different amounts of levels: 16 (4-bit) and 64 (6-bit).

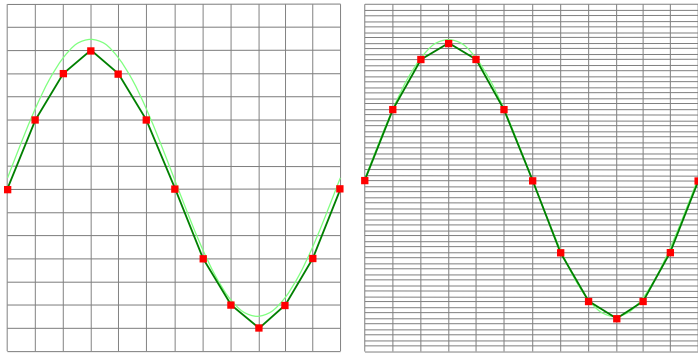


Figure 3.12: The effect of the resolution

The Handyscope HS6 DIFF measures at e.g. 14 bit resolution ($2^{14}=16384$ levels). The smallest detectable voltage step depends on the input range. This voltage can be calculated as:

$$\text{VoltageStep} = \text{FullInputRange} / \text{LevelCount}$$

For example, the 200 mV range ranges from -200 mV to +200 mV, therefore the full range is 400 mV. This results in a smallest detectable voltage step of $0.400\text{V} / 16384 = 24.41 \mu\text{V}$.

3.5 Signal coupling

The Handyscope HS6 DIFF has two different settings for the signal coupling: AC and DC. In the setting DC, the signal is directly coupled to the input circuit. All signal components available in the input signal will arrive at the input circuit and will be measured.

In the setting AC, a capacitor will be placed between the input connector and the input circuit. This capacitor will block all DC components of the input signal and let all AC components pass through. This can be used to remove a large DC component of the input signal, to be able to measure a small AC component at high resolution.



When measuring DC signals, make sure to set the signal coupling of the input to DC.



Before connecting the Handyscope HS6 DIFF to the computer, the drivers need to be installed.

4.1 Introduction

To operate a Handyscope HS6 DIFF, a driver is required to interface between the measurement software and the instrument. This driver takes care of the low level communication between the computer and the instrument, through USB. When the driver is not installed, or an old, no longer compatible version of the driver is installed, the software will not be able to operate the Handyscope HS6 DIFF properly or even detect it at all.

The installation of the USB driver is done in a few steps. Firstly, the driver has to be pre-installed by the driver setup program. This makes sure that all required files are located where Windows can find them. When the instrument is plugged in, Windows will detect new hardware and install the required drivers.

4.2 Where to find the driver setup

The driver setup program and measurement software can be found in the download section on TiePie engineering's website and on the CD-ROM that came with the instrument. It is recommended to install the latest version of the software and USB driver from the website. This will guarantee the latest features are included.

4.3 Executing the installation utility

To start the driver installation, execute the downloaded driver setup program, or the one on the CD-ROM that came with the instrument. The driver install utility can be used for a first time

installation of a driver on a system and also to update an existing driver.

The screen shots in this description may differ from the ones displayed on your computer, depending on the Windows version.

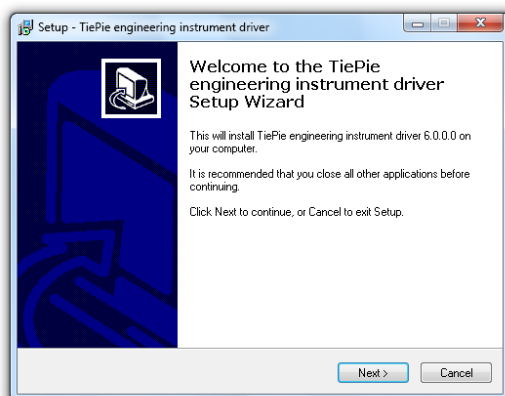


Figure 4.1: Driver install: step 1

When drivers were already installed, the install utility will remove them before installing the new driver. To remove the old driver successfully, **it is essential** that the Handyscope HS6 DIFF is disconnected from the computer prior to starting the driver install utility. When the Handyscope HS6 DIFF is used with an external power supply, this must be disconnected too.

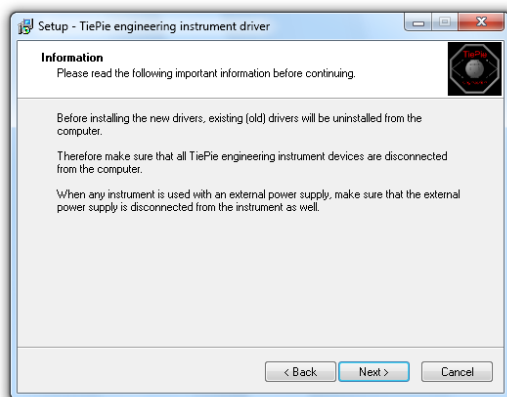


Figure 4.2: Driver install: step 2

When the instrument is still connected, the driver install utility will recognize it and report this. You will be asked to continue anyway.

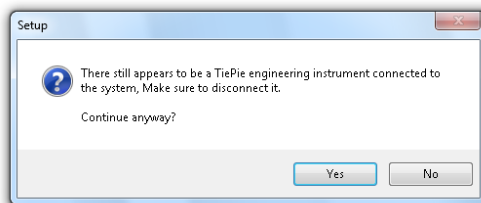


Figure 4.3: Driver install: Instrument is still connected

Clicking "**No**" will bring back the previous screen. The instrument should now be disconnected. Then the removal of the existing driver can be continued by clicking "**Next**".

Clicking "**Yes**" will ignore the fact that the instrument is still connected and continue removal of the old driver. This option is **not** recommended, as removal may fail, after which installation of the new driver may fail as well.

When no existing driver was found or the existing driver is removed, the location for the pre-installation of the new driver can be selected.

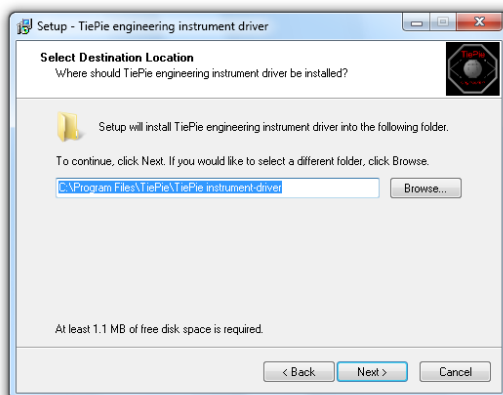


Figure 4.4: Driver install: step 3

On Windows XP, the installation may inform about the drivers not being "Windows Logo Tested". The driver is not causing any danger for your system and can be safely installed. Please ignore this warning and continue the installation.

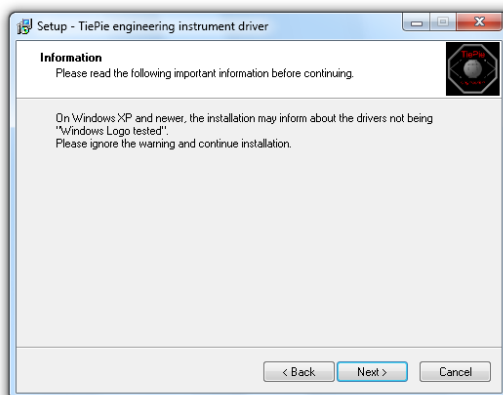


Figure 4.5: Driver install: step 4

The driver install utility now has enough information and can install the drivers. Clicking ***”Install”*** will remove existing drivers and install the new driver. A *remove entry* for the new driver is added to the software applet in the Windows control panel.

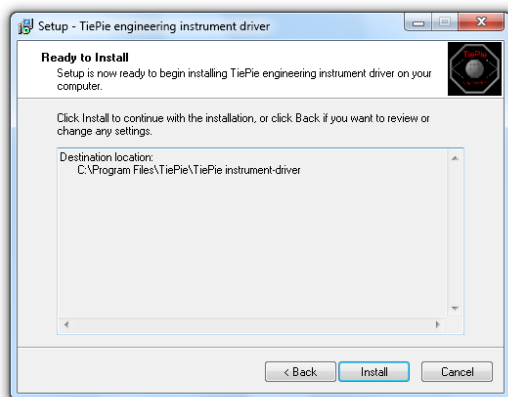


Figure 4.6: Driver install: step 5

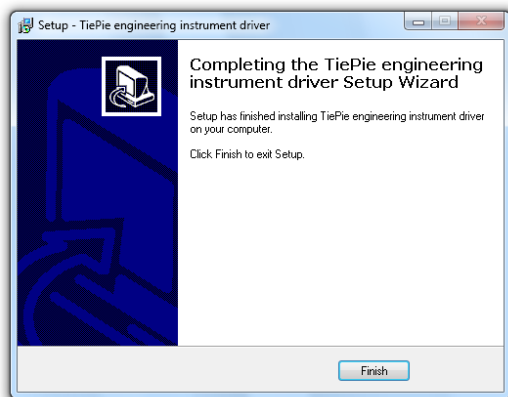


Figure 4.7: Driver install: Finished



Drivers have to be installed before the Handyscope HS6 DIFF is connected to the computer for the first time. See chapter 4 for more information.

5.1 Power the instrument

The Handyscope HS6 DIFF is powered by the USB, no external power supply is required. Only connect the Handyscope HS6 DIFF to a bus powered USB port, otherwise it may not get enough power to operate properly.

5.1.1 External power

In certain cases, the Handyscope HS6 DIFF cannot get enough power from the USB port. When a Handyscope HS6 DIFF is connected to a USB port, powering the hardware will result in an inrush current higher than the nominal current. After the inrush current, the current will stabilize at the nominal current.

USB ports have a maximum limit for both the inrush current peak and the nominal current. When either of them is exceeded, the USB port will be switched off. As a result, the connection to the Handyscope HS6 DIFF will be lost.

Most USB ports can supply enough current for the Handyscope HS6 DIFF to work without an external power supply, but this is not always the case. Some (battery operated) portable computers or (bus powered) USB hubs do not supply enough current. The exact value at which the power is switched off, varies per USB controller, so it is possible that the Handyscope HS6 DIFF functions properly on one computer, but does not on another.

In order to power the Handyscope HS6 DIFF externally, an external power input is provided for. It is located at the rear of the Handyscope HS6 DIFF. Refer to paragraph 8.1 for specifications of the external power input.

5.2 Connect the instrument to the computer

After the new driver has been pre-installed (see chapter 4), the Handyscope HS6 DIFF can be connected to the computer. When the Handyscope HS6 DIFF is connected to a USB port of the computer, Windows will report new hardware. The Found New Hardware Wizard will appear.

Depending on the Windows version, the New Hardware Wizard will show a number of screens in which it will ask for information regarding the drivers of the newly found hardware. The appearance of the dialogs will differ for each Windows version and might be different on the computer where the Handyscope HS6 DIFF is installed.



The driver consists of two parts which are installed separately.

Once the first part is installed, the installation of the second part will start automatically. Installation of the second part is identical to the first part, therefore they are not described individually here.

5.2.1 Found New Hardware Wizard

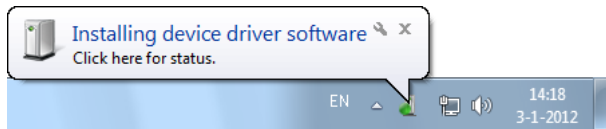


Figure 5.1: Hardware install: step 1

Windows has detected new hardware and starts installing the drivers.

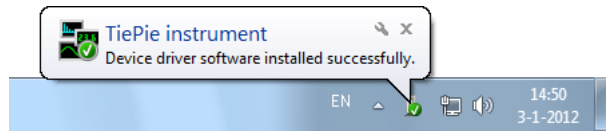


Figure 5.2: Hardware install: step 2

Once ready, Windows will report that the driver is installed.

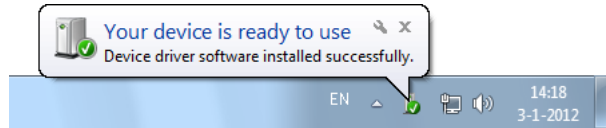


Figure 5.3: Hardware install: step 3

Now the driver is installed, the measurement software can be installed and the Handyscope HS6 DIFF can be used.

5.3 Plug into a different USB port

When the Handyscope HS6 DIFF is plugged into a different USB port, some Windows versions will treat the Handyscope HS6 DIFF as different hardware and will ask to install the drivers again. This is controlled by Microsoft Windows and is not caused by TiePie engineering.

5.4 Operating conditions

The Handyscope HS6 DIFF is ready for use as soon as the software is started. However, to achieve rated accuracy, allow the instrument to settle for 20 minutes. If the instrument has been subjected to extreme temperatures, allow additional time for internal temperatures to stabilize. Because of temperature compensated calibration, the Handyscope HS6 DIFF will settle within specified accuracy regardless of the surrounding temperature.

When more channels are required than one instrument can offer, multiple instruments can be combined into a larger combined instrument. To combine two or more instruments, the instruments need to be connected to each other using special cables.

The CMI (Combine Multiple Instruments) interface that is available by default on the Handyscope HS6 DIFF provides an easy way to couple multiple oscilloscopes to one combined oscilloscope. The CMI interface supports automatic recognition of the instrument. The high speed trigger bus is automatically terminated with the correct impedance and the high speed sampling bus is automatically configured and terminated at the beginning and end of the bus. The high speed sampling bus takes care that each Handyscope is fully synchronized to ensure that even at the highest sampling rate the instruments operate at the same sample clock (0 ppm clock error!). The connection order when combining multiple instruments is not important. The CMI interface has built-in intelligence to detect the connections and terminate all buses properly at both ends of the bus. So instruments can be connected to each other in random order. Placing terminators and determining the proper connection order is not required!

Advantages of the CMI (Combine Multiple Instruments) interface are:

- automatic instrument recognition,
- automatic creation and termination of the high speed trigger bus,
- automatic creation and termination of the high speed sampling bus,
- automatic master/slave setting of the sampling clock bus.

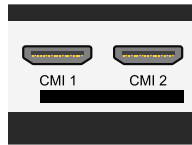


Figure 6.1: CMI connectors

Connecting is done by daisy chaining the CMI connectors of the instruments prior to starting the software, using special coupling cables (order number TP-C50H). The software will detect how the instruments are connected to each other and will automatically terminate the connection bus. The software will combine the connected instruments to one large instrument. The combined instruments will now sample using the same clock, with a deviation of 0 ppm.



Figure 6.2: 5 Handyscope HS6 DIFF's combined

A 20 channel instrument is easily made by connecting five Handyscope HS6 DIFF's to each other.

When combining one or more Handyscope HS6 DIFF's with Handyscope HS5s, the daisy chained CMI bus must begin or end with a Handyscope HS6 DIFF.

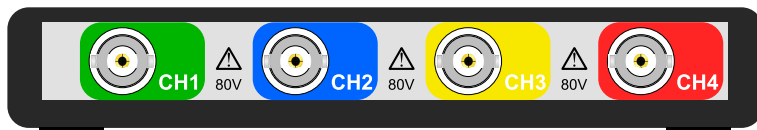


Figure 7.1: Front panel

7.1 Channel input connectors

The CH1 – CH4 BNC connectors are the main inputs of the acquisition system. The isolated BNC connectors are not connected to the ground of the Handyscope HS6 DIFF.

7.2 Power indicator

A power indicator is situated at the top cover of the instrument. It is lit when the Handyscope HS6 DIFF is powered.

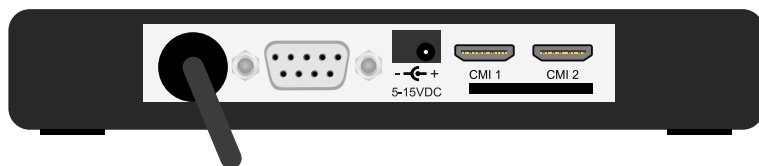


Figure 8.1: Rear panel

8.1 Power

The Handyscope HS6 DIFF is powered through the USB. If the USB cannot supply enough power, it is possible to power the instrument externally. The Handyscope HS6 DIFF has two external power inputs located at the rear of the instrument: the dedicated power connector and a pin of the 9 pin D-sub extension connector. The specifications of the dedicated power connector are:



Pin	Dimension	Description
Center pin	Ø1.3 mm	positive
Outside bushing	Ø3.5 mm	ground

Figure 8.2: Power connector

To power the instrument through the extension connector, the power has to be applied to pin 7 of the extension connector. Pin 6 can be used as ground. The following minimum and maximum voltages apply to the power inputs:

Minimum	4.5 V _{DC} / 2 A max.
Maximum	15 V _{DC} / 1 A max.

Table 8.1: Maximum voltages

Note that the externally applied voltage should be higher than the USB voltage to relieve the USB port.

8.1.1 Power adapter

The Handyscope HS6 DIFF comes with an external power adapter that can be connected to any mains power net that supplies 100 – 240 V_{AC}, 50 – 60 Hz. The external power adapter can be connected to the dedicated power connector.



Figure 8.3: Power adapter

8.1.2 USB power cable

A special USB external power cable is supplied with the Handyscope HS6 DIFF that can be used instead of a power adapter. One end of this cable can be connected to a second USB port on the computer, the other end can be plugged in the dedicated power connector at the rear of the instrument. The power for the instrument will then be taken from two USB ports.



Figure 8.4: USB power cable

8.2 USB

The Handyscope HS6 DIFF is equipped with a USB 3.0 Super speed (5 Gbit/s) interface with a fixed cable with type A plug. It will also work on a computer with a USB 2.0 interface, but will then operate at 480 Mbit/s.

8.3 Extension Connector



Figure 8.5: Extension connector

A 9 pin female D-sub connector is available at the back of the Handyscope HS6 DIFF containing the following signals:

Pin	Description	Pin	Description
1	EXT 1 (LVTTL)	6	GND
2	EXT 2 (LVTTL)	7	Power IN
3	Probe Cal	8	Power OUT (see description)
4	reserved	9	reserved
5	reserved		

Table 8.2: Pin description Extension connector

Pins EXT 1 and EXT 2 are equipped with internal 1 kOhm pull-up resistors to 2.5 V. These pins can simultaneously be used as inputs and outputs. Each pin can be configured as external digital trigger input for the acquisition system of the Handyscope HS6 DIFF.

Pin 3, Probe Cal, has a 1 kHz, -1 V to 1 V square wave signal that can be used to perform probe frequency compensations.

Pin 8, Power OUT, has the same potential as the Handyscope HS6 DIFF power supply. When the Handyscope HS6 DIFF is USB powered, it is at USB power level. When the Handyscope HS6 DIFF is externally powered, it is at the same level as the external power input.

8.4 CMI

The Handyscope HS6 DIFF has two Combine Multiple Instruments interface (CMI) connectors at the rear of the instrument. These can be used to combine multiple instruments to a single combined instrument to perform fully synchronized measurements. This requires a TP-C50H coupling cable per two instruments.



Figure 8.6: CMI connector

Pin	Description	Pin	Description
1	GND	11	Data OK P EXT (LVDS)
2	EXT CLK P (LVDS)	12	Data OK N EXT (LVDS)
3	EXT CLK N (LVDS)	13	reserved
4	GND	14	reserved
5	Data OK (I/O)	15	reserved
6	reserved	16	reserved
7	GND	17	GND
8	Ext Trigger (I/O)	18	reserved
9	reserved	19	GND
10	GND		

Table 8.3: Pin description CMI connector

The I/O signals (pins 5 and 8) can be used as input and output. They are digital signals switching between 0 V and 2.5 V. The LVDS external clock (pins 2 and 3) must be either 10 MHz, $\pm 1\%$ or 16.369 MHz $\pm 1\%$.



The CMI connectors use HDMI type C sockets, but are not HDMI compliant. They can not be used to connect an HDMI device to the Handyscope HS6 DIFF.

8.5 Ventilation slot

Below the two CMI connectors a ventilation slot is located, with a fan behind it.

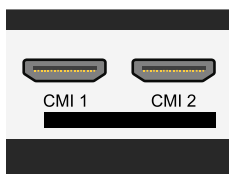


Figure 8.7: Ventilation slot



Do not block the ventilation slot as this may cause the Handyscope HS6 DIFF becoming too hot.

Do not insert objects in the ventilation slot as this may damage the fan.

To achieve rated accuracy, allow the instrument to settle for 20 minutes. When subjected to extreme temperatures, allow additional time for internal temperatures to stabilize. Because of temperature compensated calibration, the Handyscope HS6 DIFF will settle within specified accuracy regardless of the surrounding temperature.

9.1 Acquisition system

Number of input channels	4 analog				
CH1, CH2, CH3, CH4	Isolated BNC				
Type	Differential input				
Resolution	8, 12, 14, 16 bit user selectable				
Accuracy	0.25% of full scale \pm 1 LSB				
Range	\pm 200 mV to \pm 80 V full scale				
Coupling	AC/DC				
Impedance	2 M Ω / 12 pF \pm 1 % 1 M Ω / 20 pF \pm 1 % when SafeGround enabled				
Maximum voltage	200 V (DC + AC peak <10 kHz)				
Maximum Common Mode voltage	200 mV to 800 mV ranges : 2 V 2 V to 8 V ranges : 20 V 20 V to 80 V ranges : 200 V				
Common Mode Rejection Ratio	-47 dB				
Bandwidth	HS6D-1000	HS6D-500	HS6D-200	HS6D-100	HS6D-50
-3 dB, at 75 % of full scale	250 MHz	250 MHz	250 MHz	100 MHz	100 MHz
Limit, selectable per channel	Off (250 MHz) 150 MHz 100 MHz 75 MHz	Off (250 MHz) 150 MHz 100 MHz 75 MHz	Off (250 MHz) 150 MHz 100 MHz 75 MHz	Off (100 MHz) 75 MHz 50 MHz 25 MHz	Off (100 MHz) 75 MHz 50 MHz 25 MHz
AC coupling cut off freq. (-3dB)	\pm 1.5 Hz				
SureConnect	Optionally available (option S)				
Maximum voltage on connection	200 V (DC + AC peak <10 kHz)				
Resistance measurement	Optionally available (option S)				
Ranges	100 Ohm to 2 MOhm full scale				
Accuracy	1%				
Response time (to 95%)	<10 μ s				
SafeGround	Optionally available (option G)				
Maximum voltage on connection	200 V (DC + AC peak <10 kHz)				
Maximum switch off current	500 mA				
Response time	<100 ns				

9.2 Acquisition system (continued)

Maximum sampling rate	HS6D-1000	HS6D-500	HS6D-200	HS6D-100	HS6D-50
8 bit					
Measuring 1 channel	1 GS/s	500 MS/s	200 MS/s	100 MS/s	50 MS/s
Measuring 2 channels	500 MS/s	200 MS/s	100 MS/s	50 MS/s	20 MS/s
Measuring 3 or 4 channels	200 MS/s	100 MS/s	50 MS/s	20 MS/s	10 MS/s
12 bit					
Measuring 1 channel	500 MS/s	200 MS/s	100 MS/s	50 MS/s	20 MS/s
Measuring 2 channels	200 MS/s	100 MS/s	50 MS/s	20 MS/s	10 MS/s
Measuring 3 or 4 channels	100 MS/s	50 MS/s	20 MS/s	10 MS/s	5 MS/s
14 bit	100 MS/s	50 MS/s	20 MS/s	10 MS/s	5 MS/s
16 bit	6.25 MS/s	3.125 MS/s	1.25 MS/s	625 kS/s	312.5 kS/s
Maximum streaming rate ⁶	HS6D-1000	HS6D-500	HS6D-200	HS6D-100	HS6D-50
8 bit					
Measuring 1 channel	200 MS/s ¹	100 MS/s ¹	40 MS/s	20 MS/s	10 MS/s
Measuring 2 channels	100 MS/s ²	50 MS/s ²	20 MS/s	10 MS/s	5 MS/s
Measuring 3 or 4 channels	50 MS/s ³	25 MS/s ³	10 MS/s	5 MS/s	2.5 MS/s
12 bit					
Measuring 1 channel	200 MS/s ²	50 MS/s ²	20 MS/s	10 MS/s	5 MS/s
Measuring 2 channels	100 MS/s ³	25 MS/s ³	10 MS/s	5 MS/s	2.5 MS/s
Measuring 3 or 4 channels	50 MS/s ⁴	12.5 MS/s ⁴	5 MS/s	2.5 MS/s	1.25 MS/s
14 bit					
Measuring 1 channel	100 MS/s ²	50 MS/s ²	20 MS/s	10 MS/s	5 MS/s
Measuring 2 channels	50 MS/s ³	25 MS/s ³	10 MS/s	5 MS/s	2.5 MS/s
Measuring 3 or 4 channels	25 MS/s ⁴	12.5 MS/s ⁴	5 MS/s	2.5 MS/s	1.25 MS/s
16 bit	6.25 MS/s ⁵	3.125 MS/s	1.25 MS/s	625 kS/s	312.5 kS/s
	¹ ≤ 40 MS/s when connected to USB 2.0				
	² ≤ 20 MS/s when connected to USB 2.0				
	³ ≤ 10 MS/s when connected to USB 2.0				
	⁴ ≤ 5 MS/s when connected to USB 2.0				
	⁵ ≤ 3.125 MS/s when connected to USB 2.0, measuring 2 or more channels				
	⁶ On some computers, the highest streaming rates may not be available, due to computer restrictions.				
Sampling source					
Internal	TCXO				
Accuracy	±0.0001%				
Stability	±1 ppm over 0 °C to +55 °C				
Time base aging	±1 ppm per year time base aging				
External	LVDS, on CMI connectors				
Input range	10 MHz ±1 % 16.369 MHz ±1 %				
Memory	Standard model		XM option		
8 bit					
Measuring 1 channel	1 MS		256 MS		
Measuring 2 channels	512 KS		128 MS		
Measuring 3 or 4 channels	256 KS		64 MS		
12, 14, 16 bit					
Measuring 1 channel	512 KS		128 MS		
Measuring 2 channels	256 KS		64 MS		
Measuring 3 or 4 channels	128 KS		32 MS		

9.3 Trigger system

System	Digital, 2 levels
Source	CH1, CH2, CH3, CH4, digital external, OR
Trigger modes	Rising edge, falling edge, any edge, inside window, outside window, enter window, exit window, pulse width
Level adjustment	0 to 100% of full scale
Hysteresis adjustment	0 to 100% of full scale
Resolution	0.024 % (12 bits)/0.006 % (14/16 bits)
Pre trigger	0 to selected record length, 1 sample resolution
Post trigger	0 to selected record length, 1 sample resolution
Trigger hold-off	0 to 64 MSamples, 1 sample resolution
Trigger delay	0 to 16 GSamples, 1 sample resolution
Digital external trigger	
Input	Extension connector pins 1 and 2
Range	0 to 2.5 V (TTL)
Coupling	DC
Jitter	≤ 1 sample

9.4 Power

Power	From USB or external input
Consumption	5 V _{DC} , 1200 mA max
Power adapter	External
Input	110 to 240 V _{AC} , 50 to 60 Hz 0.85 A Max., 50 VA to 80 VA
Output	5.5 V _{DC} , 2 A
Dimension	
Height	30 mm / 1.2"
Width	45 mm / 1.8"
Length	75 mm / 3"
Order number	TP-UE15WCP1-055200SPA
Replaceable mains plugs for	EU, US, AU, UK

9.5 Multi-instrument synchronization

Maximum number of instruments	Limited by available number of USB ports
Synchronization accuracy	0 ppm

9.6 Probe calibration

Output	Extension connector pins 3 (signal) and 6 (ground)
Signal	Square wave
Level	-1 V to 1 V
Frequency	1 kHz

9.7 Physical

Height	25 mm / 1.0"
Length	170 mm / 6.7"
Width	140 mm / 5.2"
Weight	500 g / 17 ounce
USB cord length	1.8 m / 70"

9.8 I/O connectors

CH1, CH2, CH3, CH4	Isolated BNC
USB	Fixed cable with USB 3.0 type A plug, 1.8 m
Extension connector	D-sub 9 pins female
Power	3.5 mm power socket
CMI connectors 1–2	HDMI type C socket

9.9 Interface

Interface	USB 3.0 SuperSpeed (5 Gbit/s) (USB 2.0 HighSpeed (480 Mbit/s) compatible)
-----------	--

9.10 System requirements

PC I/O connection	USB 2.0, USB 3.0 or USB 3.1
Operating System	Windows 7/8/10 32 and 64 bits

9.11 Environmental conditions

Operating	
Ambient temperature	20 °C to 25 °C (10 °C to 40 °C without specifications)
Relative humidity	10 to 90% non condensing
Storage	
Ambient temperature	-20 °C to 70 °C
Relative humidity	5 to 95% non condensing

9.12 Measure leads

Model	TP-C812B
Type	Differential
Connectors	
Instrument side	Isolated male BNC connector
Test point side	Red and black 4 mm shrouded banana plugs
Bandwidth	7 MHz
Safety	CAT III, 1000 V, double isolated
Dimensions	
Total length	2000 mm
Length to split	800 mm
Length individual ends	1200 mm
Weight	80 g
Color	Black
Heat resistant	Yes
Certification and compliances	
CE conformity	Yes
RoHS	Yes
Accessories	
Color coding rings	5 x 3 rings, various colors
Suitable instrument	Handyscope HS6 DIFF

9.13 Differential attenuators

Model	TP-DA10
Attenuation	10 x, differential
Bandwidth	25 MHz
Input impedance	10 M Ω // 15 pF
Maximum input voltage	300 V
Input connector	Female BNC
Output connector	Male BNC
Dimensions	
Length	79 mm
Diameter	19 mm
Weight	30 g
Suitable instrument	Handyscope HS6 DIFF

9.14 Certifications and Compliances

CE mark compliance	Yes
RoHS	Yes
EN 55011:2009/A1:2010	Yes
EN 55022:2006/A1:2007	Yes
IEC 61000-6-1/EN 61000-6-1:2007	Yes
IEC 61000-6-1/EN 61000-6-1:2007	Yes
Canada: ICES-001:2004	Yes
Australia/New Zealand: AS/NZS	Yes

9.15 Package contents

Instrument	Handyscope HS6 DIFF
Measure leads	4 × Measure lead TP-C812B, Differential BNC to 4 mm banana plug, 2 m long
Differential attenuator	4 × Differential Attenuator TP-DA10
Alligator clips, large	8 × Alligator Clip TP-AC80I: green, blue, yellow, red and 4 × black
Alligator clips, medium	8 × Alligator Clip TP-AC10I: green, blue, yellow, red and 4 × black
Alligator clips, small	8 × Alligator Clip TP-AC5: green, blue, yellow, red and 4 × black
Accessories	External power adapter USB power cable
Software	Windows 7/8/10
Drivers	Windows 7/8/10
Manual	Instrument manual and software user's manual

If you have any suggestions and/or remarks regarding this manual,
please contact:

TiePie engineering
Koperslagersstraat 37
8601 WL SNEEK
The Netherlands

Tel.: +31 515 415 416
Fax: +31 515 418 819
E-mail: support@tiepie.nl
Site: www.tiepie.com

