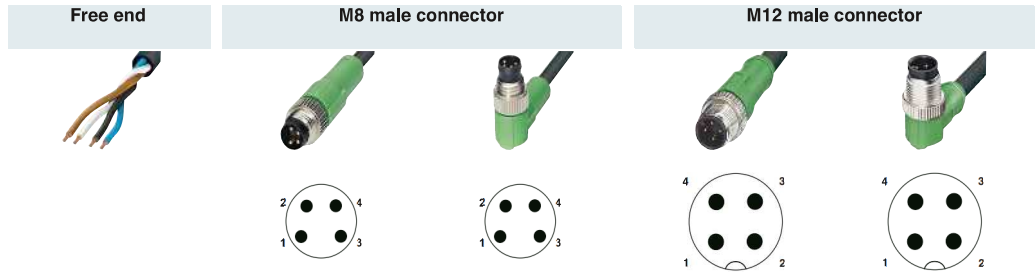


# Sensor/actuator cabling

## Assembled cables

### M8 and M12 SAC cable, 4-pos., cable type: PVC

**Notes:**  
For information about the cable qualities, see page 318



	Ordering data		Ordering data		Ordering data		Ordering data		Ordering data		
Free end	Order No.		Order No.		Order No.		Order No.		Order No.		
		1.5 m	<a href="#">1415542</a>	1.5 m	<a href="#">1415546</a>	1.5 m	<a href="#">1415585</a>	1.5 m	<a href="#">1415591</a>		
		3 m	<a href="#">1415543</a>	3 m	<a href="#">1415547</a>	3 m	<a href="#">1415588</a>	3 m	<a href="#">1415592</a>		
		5 m	<a href="#">1415544</a>	5 m	<a href="#">1415548</a>	5 m	<a href="#">1415589</a>	5 m	<a href="#">1415593</a>		
		10 m	<a href="#">1415545</a>	10 m	<a href="#">1415549</a>	10 m	<a href="#">1415590</a>	10 m	<a href="#">1415594</a>		
		Variable	<a href="#">1697755</a>	Variable	<a href="#">1697768</a>	Variable	<a href="#">1696947</a>	Variable	<a href="#">1696950</a>		
<b>M8 female connector, straight</b>		1.5 m	<a href="#">1415550</a>	0.3 m	<a href="#">1415556</a>	0.3 m	<a href="#">1415576</a>	0.3 m	<a href="#">1415671</a>		
		3 m	<a href="#">1415551</a>	0.6 m	<a href="#">1415557</a>	0.6 m	<a href="#">1415577</a>	0.6 m	<a href="#">1415672</a>		
		5 m	<a href="#">1403252</a>	1.5 m	<a href="#">1415558</a>	1.5 m	<a href="#">1415578</a>	1.5 m	<a href="#">1415673</a>		
		10 m	<a href="#">1401062</a>	3 m	<a href="#">1415560</a>	3 m	<a href="#">1415579</a>	3 m	<a href="#">1415674</a>		
		Variable	<a href="#">1697771</a>	Variable	<a href="#">1697797</a>	Variable	<a href="#">1697810</a>	Variable	<a href="#">1697072</a>	Variable	<a href="#">1507874</a>
<b>M8 female connector, angled</b>		1.5 m	<a href="#">1415552</a>	0.3 m	<a href="#">1415562</a>	0.3 m	<a href="#">1415580</a>	0.3 m	<a href="#">1415667</a>		
		3 m	<a href="#">1415554</a>	0.6 m	<a href="#">1415572</a>	0.6 m	<a href="#">1415581</a>	0.6 m	<a href="#">1415668</a>		
		5 m	<a href="#">1403254</a>	1.5 m	<a href="#">1415573</a>	1.5 m	<a href="#">1415582</a>	1.5 m	<a href="#">1415669</a>		
		10 m	<a href="#">1401064</a>	3 m	<a href="#">1415574</a>	3 m	<a href="#">1415583</a>	3 m	<a href="#">1415670</a>		
		Variable	<a href="#">1697784</a>	Variable	<a href="#">1697807</a>	Variable	<a href="#">1697823</a>	Variable	<a href="#">1697085</a>		
<b>M8 female connector, angled, with 2 LEDs</b>		Variable	<a href="#">1517673</a>					Variable	<a href="#">1515031</a>		
<b>M12 female connector, straight</b>		1.5 m	<a href="#">1544976</a>			0.3 m	<a href="#">1415611</a>	0.3 m	<a href="#">1415627</a>		
		3 m	<a href="#">1404407</a>			0.6 m	<a href="#">1415612</a>	0.6 m	<a href="#">1415628</a>		
		5 m	<a href="#">1404408</a>			1.5 m	<a href="#">1415613</a>	1.5 m	<a href="#">1415635</a>		
		10 m	<a href="#">1446333</a>			3 m	<a href="#">1415614</a>	3 m	<a href="#">1415636</a>		
		Variable	<a href="#">1696963</a>	Variable	<a href="#">1506697</a>	Variable	<a href="#">1697001</a>	Variable	<a href="#">1697030</a>		
<b>M12 female connector, straight, with 2 LEDs</b>		1.5 m	<a href="#">1415596</a>								
		3 m	<a href="#">1415597</a>								
		5 m	<a href="#">1415602</a>								
		10 m	<a href="#">1415605</a>								
		Variable	<a href="#">1696976</a>								
<b>M12 female connector, angled</b>		1.5 m	<a href="#">1415606</a>			0.3 m	<a href="#">1415617</a>	0.3 m	<a href="#">1415642</a>		
		3 m	<a href="#">1693526</a>			0.6 m	<a href="#">1454817</a>	0.6 m	<a href="#">1415643</a>		
		5 m	<a href="#">1693539</a>			1.5 m	<a href="#">1415618</a>	1.5 m	<a href="#">1415644</a>		
		10 m	<a href="#">1415608</a>			3 m	<a href="#">1415619</a>	3 m	<a href="#">1415645</a>		
		Variable	<a href="#">1696989</a>	Variable	<a href="#">1511718</a>	Variable	<a href="#">1697836</a>	Variable	<a href="#">1697014</a>	Variable	<a href="#">1697043</a>
<b>M12 female connector, angled, with 3 LEDs</b>		1.5 m	<a href="#">1415609</a>			0.3 m	<a href="#">1415620</a>	0.3 m	<a href="#">1415646</a>		
		3 m	<a href="#">1415610</a>			0.6 m	<a href="#">1415623</a>	0.6 m	<a href="#">1415647</a>		
		5 m	<a href="#">1404961</a>			1.5 m	<a href="#">1415624</a>	1.5 m	<a href="#">1415648</a>		
		10 m	<a href="#">1401063</a>			3 m	<a href="#">1415625</a>	3 m	<a href="#">1415650</a>		
		Variable	<a href="#">1696992</a>			Variable	<a href="#">1697027</a>	Variable	<a href="#">1697056</a>		

### Information for products with fixed cable length:

Products with fixed cable length are produced with the PVC cable type and are available from stock.

### Ordering data for products with variable cable:

For a 4.5 m long sensor/actuator cable, PVC - black, with a straight 4-pos. M12 male and a straight M12 female, the ordering data is as follows:

Order No.	Cable type	Length [m] 40 m, maximum
1697001	PVC	4.5

Minimum order amount:  
25 pcs.

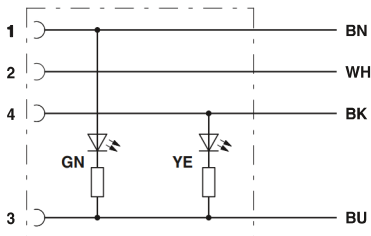
Increments:  
0.2 ... 3 m = 0.1 m  
> 3 m = 0.5 m

Cable description	Cable type	Suitable for:
PVC – black E221474	PVC	M8/M12
PVC – gray E221474	500	M8/M12
PVC – yellow E221474	540	M12
PVC 105° – yellow E221474	542	M12
PUR, halogen-free – black E221474	PUR	M8/M12
PUR, halogen-free – yellow E221474	240	M12
PUR, halogen-free – gray E221474	280	M8/M12
PUR irradiated – orange E221474	150	M12
PUR irradiated – yellow E221474	160	M12
TPE-U highly flexible – gray E221474	800	M8/M12

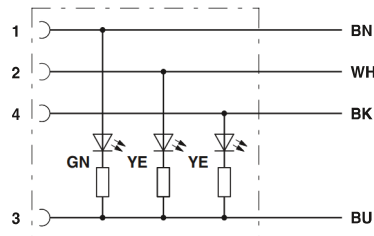
Color coding	Pin assignment
BN	1
WH	2
BK	4
BU	3

With a combination of M12 and M8 connectors, the limiting M8 value applies to the rated voltage.

	Technical data	Technical data	Technical data	Technical data
	M8 4-pos.	M8 4-pos., with LED	M12 4-pos.	M12 4-pos., with LED
Rated voltage	48 V AC / 60 V DC	24 V / 24 V DC	250 V AC / 250 V DC	24 V / 24 V DC
Rated current [A]	4	4	4	4
Contact material	CuSn	CuSn	CuSn	CuSn
Contact surface material	Ni/Au	Ni/Au	Ni/Au	Ni/Au
Material of grip body	TPU, hardly inflammable, self-extinguishing IEC 61076-2-104	TPU, hardly inflammable, self-extinguishing IEC 61076-2-104	TPU, hardly inflammable, self-extinguishing	TPU, hardly inflammable, self-extinguishing
M8 circular connector in accordance with:	-	-	IEC 61076-2-101	IEC 61076-2-101
M12 circular connector in accordance with:	-	-	-	-
Degree of protection	IP65 / IP67 / IP68	IP65 / IP67 / IP68	IP65 / IP67 / IP68	IP65 / IP67 / IP68
Temperature data	-25 ... 90	-25 ... 90	-25 ... 90	-25 ... 90
Male connector/female connector	[°C]	[°C]	[°C]	[°C]



Contact assignment of M8/M12 female connectors with LED



Contact assignment of M12 female connectors with LED