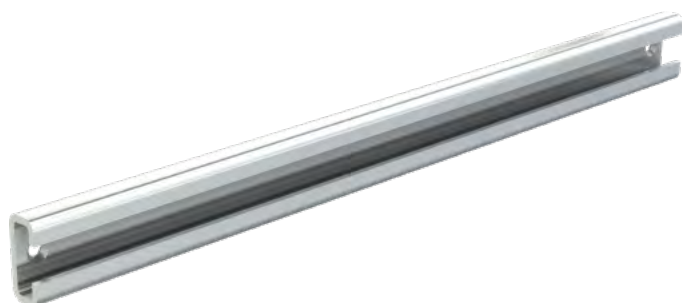


## Test lead holders MH-1...

Holder for orderly storage of test leads. C-profile rails, made of anodized aluminum of different lengths (type MPS-...) can be used as a carrier for hanger modules MPK-10. Integral spacers maintain a set spacing

of 4 mm. When necessary, the spacers can be taken away easily to store leads with smaller diameters. For thicker leads, the holders can be moved accordingly in the C-profile rail.

### MH-1/200



Order No.	Type	Length	Number of hangers
64.9242-020	MH-1/200	20 cm	12
64.9243-025	MH-1/250	25 cm	16
64.9244-033	MH-1/330	33 cm	21
64.9245-050	MH-1/500	50 cm	34
64.9246-075	MH-1/750	75 cm	52
64.9247-100	MH-1/1000	100 cm	69

### Component parts

64.9235	MPK-10	Hanger module	
64.9236-020	MPS-200	C-profile rail suitable for:	MH-1/200
64.9237-025	MPS-250	C-profile rail suitable for:	MH-1/250
64.9238-033	MPS-330	C-profile rail suitable for:	MH-1/330
64.9239-050	MPS-500	C-profile rail suitable for:	MH-1/500
64.9240-075	MPS-750	C-profile rail suitable for:	MH-1/750
64.9241-100	MPS-1000	C-profile rail suitable for:	MH-1/1000