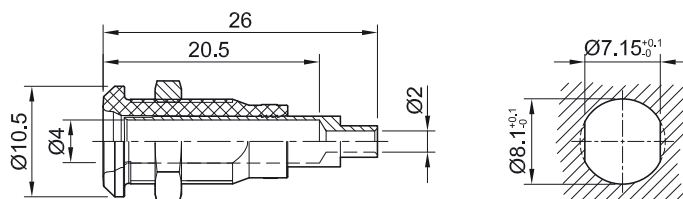


Panel-mount socket LB4H-IE/N

Insulated Ø 4 mm rigid. Machined brass.
The sockets can be screw-mounted in pre-drilled panels.

Connection: Solder connection.



Order No.	Type	Rated voltage/current		*Standard colors										
64.3042-*	LB4H-IE/N	AC 30 V/25 A DC 60 V/25 A	Ni	<table border="1"> <tr> <td>20</td> <td>21</td> <td>22</td> <td>23</td> <td>24</td> </tr> <tr> <td>25</td> <td>26</td> <td>27</td> <td>28</td> <td>29</td> </tr> </table>	20	21	22	23	24	25	26	27	28	29
20	21	22	23	24										
25	26	27	28	29										

Component parts

64.3051-*	BI-LB4x-IE/N	Socket without nut		
23.5112	MU/M8x0,5	Hexagon nut		Page 117



Assembly instructions MA168

www.staubli.com/electrical